

WELCOME to year 4!

Dear Year 4 Parents and Carers,
We welcome you to Year 4!

Our **Year 4 Teaching Teams** for 2020 are:



4F

4F will be taught
by Mrs Emma
Francis. Mrs
Ronnie Hawkins
will take the class

on Tuesday and Wednesday afternoons to teach
Geography.

4B

4B will be taught
by Miss Melissa
Buckland. Mr
Damian Lawrence
will take the class



on Tuesday and Wednesday afternoons to
teach Geography.



Robyn Fitzpatrick will be
working with Year 4 as our
wonderful Education Assistant.

Thank you for trusting us with the care and education of your treasured child. We are looking forward to a wonderful year of learning and fun! Here are a few things as we begin the new year....

This is an overview of your child's learning this Term:

In **Religious Education**, we will begin by exploring the 'law of love' and examining the Ten Commandments. Students will develop a deeper understanding of how the Commandments and Jesus' 'new commandment' guide us in living in relationship with God and others. Later in the Term we will explore the Liturgical Season of Lent as a time to reflect on how we live our lives. We will review the events of Holy Week through the Scriptural Stations of the Cross.

In **English** we will engage in a variety of activities to build knowledge, skills and understanding in the role and purpose an audience plays in the construction of an effective persuasive text. Students will engage in daily guided reading activities to build their reading stamina and develop a love of reading.

In **MATHEMATICS**, our lessons will be varied across all strands such as exploring **Whole Number; Addition and Subtraction; Multiplication and Division; patterns and algebra; DATA** and **3D Space**. We will continue to begin our Mathematics lessons with a daily 'number fluency' session to further develop our foundational knowledge.

In **Science and Technology**, our unit of work is called '**From the Farm to Families**'. Together we will investigate advancing technologies used in food and fiber production in Australian agriculture, comparing them to traditional agriculture. We will explore food that is locally sourced and using research, students will design, plan and produce an environment to support the growth of a tomato plant.

In **Geography** our unit is called **The Earth's Environment**. We will explore the climate, natural vegetation and native animals, of places in Australia and Asia. We will also examine the importance of natural vegetation and natural resources to the environment, animals and people, and learn about the ways people value environments.

In **Visual Arts** this Term the children will be exploring Ceramics. We will be looking at the history of pottery and how ancient cultures created and decorated them, as well as their uses. The Students will create a pinch pot to represent themselves.

In **Drama** we will explore the students theoretical and practical understanding of the dramatic elements of Drama. Students will take on roles in a variety of drama forms, build the action of drama, sequence and respond to drama performances.

In **PDHPE** our students will learn about wellbeing and relationships. We will develop knowledge, understanding and skills important for building respectful relationships, enhancing personal strengths and exploring personal identity to promote the health, safety and wellbeing of themselves and others. This Term we will be participating in the Dance Fever Gymnastic program. During Term 1 we will hold our School Cross Country Carnival spending time during PE to develop our running technique and build stamina.



Sports Day: Students will need to wear their sports uniform on Thursday and Friday.

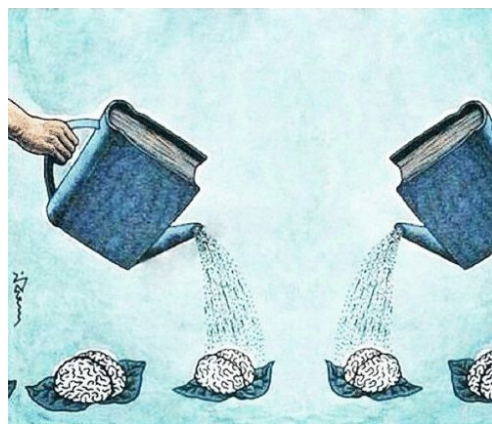
Year 4 will visit the **Library** on **Thursday** afternoons however students are also able to borrow during Lunch time. Please return any library books you have at home in their library bag. Students without a library bag will be unable to borrow a book. This can be as simple as a shopping bag or pillowcase.

During the morning we will have a short break for **Crunch & Sip**. We encourage the children to bring only fruit or vegetables. We find this is a great way to get something healthy into potentially picky eaters!

Home Learning:

HOME READING (Compulsory)

Reading for just 20 minutes a day exposes your child to 1,800,000 words in a school year, daily reading is important in the development of children's decoding and comprehension skills. We ask that you sign your child's reading diary on a daily basis as they will be checked each morning in class.



Throughout the Term we will send home optional home learning tasks, providing students with the opportunity to practice and participate in various other learning experiences at home, particularly in **Spelling** and **Mathematics**.

Communication between home and school - Please do not hesitate to contact us if you have concerns. It is often best to make an appointment by calling the front office. Urgent messages **MUST** be communicated to the front office via a note or phone call as it is unlikely that other communication platforms such as Facebook will be checked during the school day.

The school has a Facebook page which we regularly post whole school information, photos and share the children's learning on. Log in to your Facebook account and search 'St Joseph's Primary Port Macquarie' to like our school page. **IMPORTANT:** Please note that whilst we post on Facebook from time to time, our main source of information will be in **Joey's Jottings** and the **School App**. Please ring the office if you have any questions about this.



We ask that you read our school newsletter every week which will be emailed to you. **Joey's Jottings** has all the information you will need with links to different online forms. You can find all the newsletters, including past issues, on the school's web page <https://www.pmacjism.catholic.edu.au>. You can also access information through the School App. Please make these your primary source of information regarding your child's schooling.

Prayer will be held Monday mornings in the MPA. Year 4 will prepare a prayer and host one of these morning prayer experiences this Term; we will give you plenty of advance notice if you would like to attend.

PARENT INVOLVEMENT

Parents & Friends Association (P&F) - The P&F is a great way to meet other parents and become involved. All the info you need can be found on our website. You are very welcome to join us.

Canteen - This is a great way to be involved in the school. Helpers are **needed** so if you can be of assistance please let the front office know.

School Counsellor and Wellbeing Support - If you feel your child is experiencing difficulty and you would like information on accessing our school counsellor, please see your child's teacher for a referral form and this request will be passed on to our Principal, Mrs Koning. We are also fortunate to have the support of Mrs Hearle in her wellbeing role two mornings a week.

Afternoon pick up - Please enter and exit through the Hall gate. Children will be **seated in the courtyard in front of their classroom**. If you have not collected them by 3:30pm, they will be redirected to the front office and the Office Aunties will give you a call.

We look forward to working in partnership with you this year!

Kind Regards,
Your Year 4 Teaching Team